



SMI Series

SHEL LAB Microbiological Incubators
SMI2 • SMI6 • SMI7 • SMI11 • SMI12



Ideal for Clinical, Analytical, and General Laboratory Applications

SHEL LAB Microbiological Incubator Series has been updated for optimum performance. Ranging in sizes from 2 to 11.7 cubic feet, the SMI Series is guaranteed to fit any workspace.

SMI Microbiological Incubators Features and Benefits



- 1 Safety certified CAN/CSA, UL, EN, IEC 61010, and compliant with CE.
- 2 USB data logging capabilities.
- 3 7 inch capacitive touch screen.
- 4 Independent over temperature set point and operational control override for additional safety.
- 5 Side-mounted access port, 1.5" diameter (38 mm)
- 6 Stainless steel interior construction for long life operation and easy cleaning.
- 7 Condensed connection panel includes; 4-20 mA analog output, dry contact port, and USB A port.
- 8 Heated external doors prevent cold spots and maintain thermal uniformity.
- 9 Unique air-jacketed design provides excellent temperature uniformity of +/-0.5°C at 37°C.
- 10 Interior chamber outlet (1-amp).
- 11 Sealed glass inner door allows for viewing without disturbing the critical growth atmosphere.

MADE IN
USA



SMI Incubator Performance

SHEL LAB SMI Incubators are available in 100-120V or 220-240V configurations.

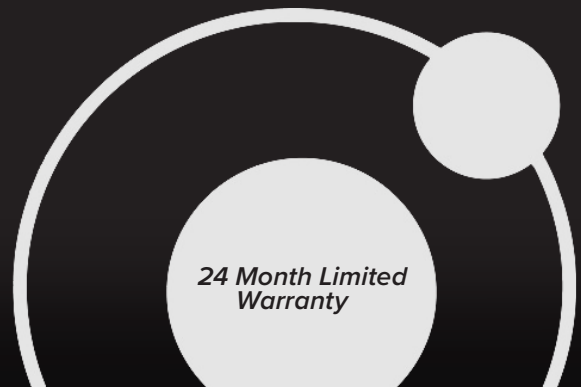
Heating - SMI Incubators rely on natural heat radiation for heating. These units can achieve ambient room temperature plus 8°C to 70°C.

Over Temperature Limit system - The OTL is a mechanical heating cutoff included with each incubator and operates independently of the incubator microprocessor temperature controller. The OTL helps safeguard the incubator by preventing runaway heating in the event of hardware failures or a sudden external heat spike.

- Hematological Studies
- Microbiological Determinations
- Pharmaceutical Stability Assays
- Bacterial Culturing and Research
- Food Processing Quality Control
- Biochemical Studies



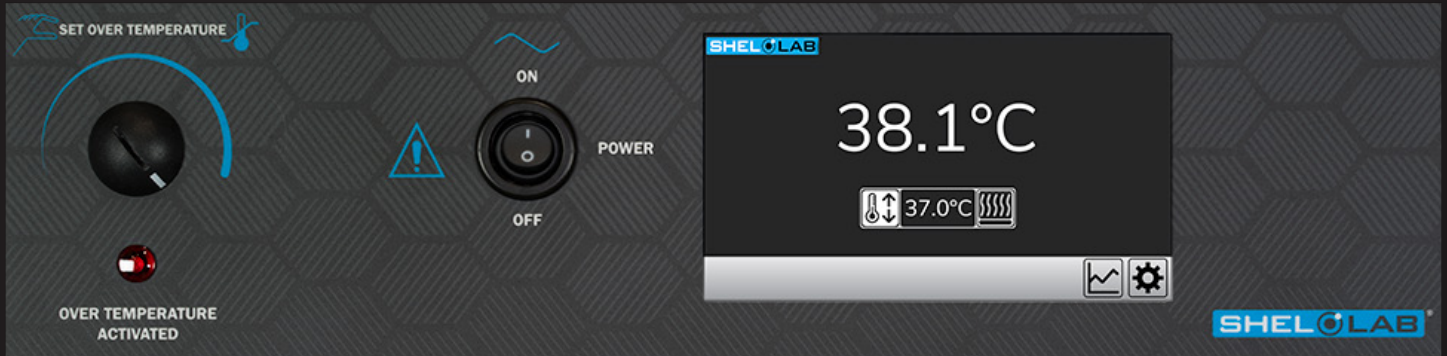
SMI12



SMI11

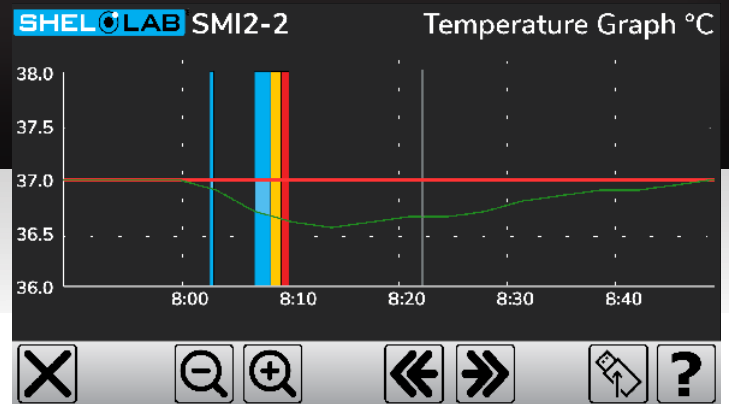
Touch Screen Controller for the SMI Series

Significantly updating SHEL LAB's line of products, the new 7 inch display provides advanced control functions. With on-screen graphing and real time data, the new SMI controller provides the highest levels of sample security and traceability.

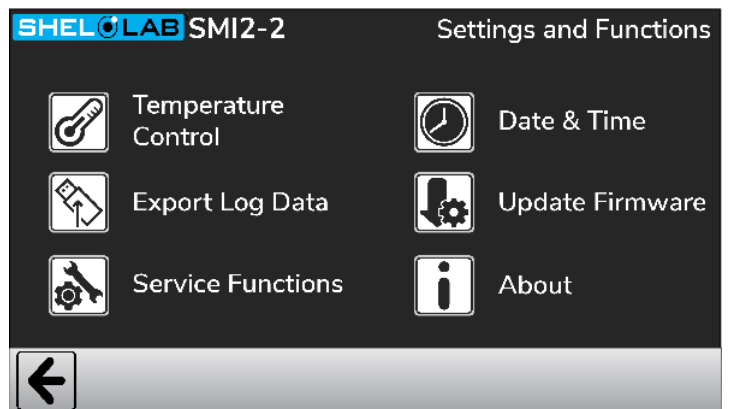


Touch Screen Controller Features

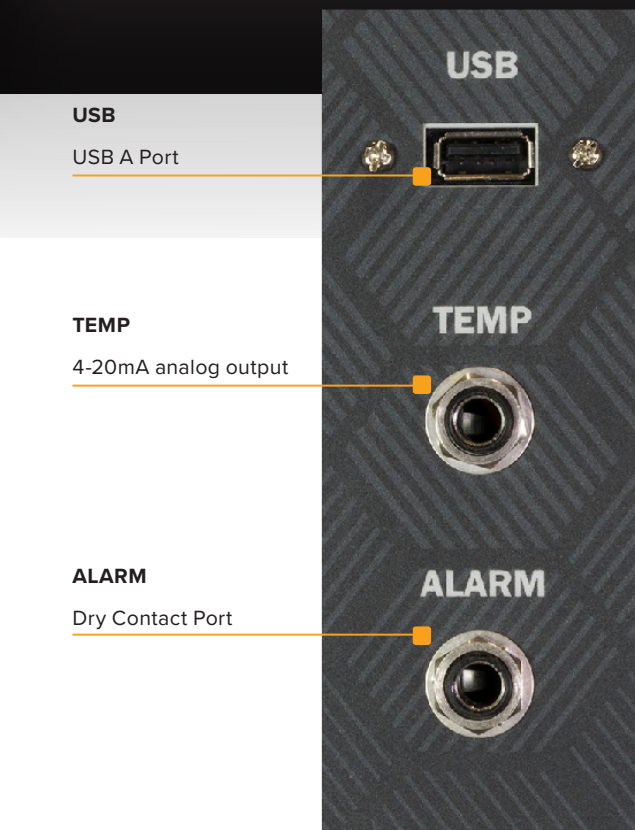
- Large, easy-to-read display screen
- Data export via USB
- Stores up to 5 years of log data
- Password locking capabilities
- Data logged once per minute
- Export in .CSV file
- Smart alarm: accounts for door openings and temperature set point changes before alarm
- Temperature deviation alarm



On-screen graphing



Main menu screen



Right Side Data Ports

SMI Models



SMI Model	SMI2	SMI6	SMI7	SMI11	SMI12
Part ID 100-120V [Part ID 220-240V]	SLM222 SLM222-E	SLM622 SLM622-E	SLM722 SLM722-E	SLM1122 SLM1122-E	SLM1222 SLM1222-E
Interior Chamber Volume	2.0 cu. ft / 56.3 L	5.9 cu. ft / 166 L	6.5 cu. ft / 184 L	10.9 cu. ft / 309 L	11.7 cu. ft / 332 L
Interior Dimensions (w x d x h)	15.0 x 15.0 x 15.2 in 381 x 381 x 386 mm	19.5 x 20.0 x 26.0 in 495 x 508 x 660 mm	23.7 x 24.0 x 20.0 in 602 x 610 x 508 mm	36.2 x 20.0 x 26.0 in 920 x 508 x 660 mm	19.5 x 20.0 x 26.0 in* 495 x 508 x 660 mm
Exterior Dimensions (w x d x h)	21.3 x 22.3 x 26.0 in 541 x 566 x 660 mm	25.3 x 27.3 x 38.0 in 643 x 693 x 965 mm	30.0 x 31.0 x 32.0 in 762 x 787 x 813 mm	42.0 x 27.0 x 38.0 in 1067 x 686 x 965 mm	25.3 x 27.3 x 76.0 in 643 x 693 x 1930 mm
Unit Weight	83 lb / 37.6 kg	158 lb / 71.7 kg	162 lb / 73.5 kg	195 lb / 88.5 kg	316 lb / 143.3 kg
Shipping Weight	117 lb / 53 kg	187 lb / 85 kg	198 lb / 90 kg	300 lb / 136 kg	372 lb / 169 kg
Incubator Performance					
Temperature Range	Ambient + 8°C to 70°C	Ambient + 8°C to 70°C	Ambient + 8°C to 70°C	Ambient + 8°C to 70°C	Ambient + 8°C to 70°C
Temperature Stability	(+/-) 0.1°C @ 37°C	(+/-) 0.1°C @ 37°C	(+/-) 0.1°C @ 37°C	(+/-) 0.1°C @ 37°C	(+/-) 0.1°C @ 37°C*
Temperature Uniformity	(+/-) 0.5°C @ 37°C	(+/-) 0.5°C @ 37°C	(+/-) 0.5°C @ 37°C	(+/-) 0.5°C @ 37°C	(+/-) 0.5°C @ 37°C*
Electrical					
Amperage	4.5 Amps / 3.0 Amps	6.0 Amps / 4.0 Amps	6.5 Amps / 5.0 Amps	10.0 Amps / 5.0 Amps	6.0 Amps / 4.0 Amps*
Misc.					
Shelves	2 Standard, 6 Total	3 Standard, 12 Total	2 Standard, 9 Total	6 Standard, 12 Total	6 Standard, 12 Total
Maximum Weight per Shelf	35 lb / 15.9 kg	35 lb / 15.9 kg	35 lb / 15.9 kg	35 lb / 15.9 kg	35 lb / 15.9 kg*
Permitted Total Load	70 lb / 31.8 kg	105 lb / 47.6 kg	70 lb / 31.8 kg	210 lb / 95.3 kg	210 lb / 95.3 kg

*Per Unit Chamber

We reserve the right to change specifications at any time

Site Preparation and Installation Guides

	SMI2	SMI6	SMI7	SMI11	SMI12
Wall Clearance, Sides	4" (102 mm)	4" (102 mm)	4" (102 mm)	4" (102 mm)	4" (102 mm)
Wall Clearance, Roof	2" (51 mm)	2" (51 mm)	2" (51 mm)	2" (51 mm)	2" (51 mm)
Door Swing	26" (660 mm)	26" (660 mm)	30" (762 mm)	26" (660 mm)	26" (660 mm)
Access Port, Right Side	1.5" (38 mm)	1.5" (38 mm)	1.5" (38 mm)	1.5" (38 mm)	1.5" (38 mm)

SMI Microbiological Incubators Options and Accessories

	SMI2	SMI6	SMI7	SMI11	SMI12
Caster Platform	9000604	9000538	9000516	9000605	9000538
Shelf Assembly, includes 1 shelf and 2 shelf slides	9751335	9751336	9751337	9751338	9751336
Extra Shelf, Max. Weight 50 lb (22 kg)	5080758	5130523	5130518	5130687	5130523
Extra Shelf Slide, 2 Required Per Shelf	5081174	5081201	5081205	5081201	5081201

Options must be specified when ordering. Contact SHEL LAB for additional information.